



2019-2020 Annual Report



Dear Friends of Lifespan,



We were days away from hosting our 24th Celebration of Aging with 1,600 people at the Convention Center when New York State went into lockdown. In a matter of hours, we pivoted from organizing the event and providing our normal array of services to delivering thousands of boxes of food, other staples and prescriptions to older adults who could not leave their homes.

Our social workers pivoted to reaching out to our client lists by phone. *“It’s been quite amazing how many clients and family caregivers are really eager to receive our call. They need someone to talk to,”* one of our staff members reported. One older adult client compared the situation to World War II. *“Food and paper products were rationed then. The only difference is that we were all together during the war. This is different. This is very lonely.”*

Lifespan was better able to help by becoming part of a coordinated community response. The Systems Integration team, led by the United Way, Congressman Joseph Morelle and Wade Norwood at Common Ground Health, organized to ensure that immediate needs were met. As Lifespan sent out calls for help, our nonprofit partners and community leaders responded. The United Way and Rochester Area Community Foundation came together to raise funds together to address nonprofits’ emergency needs. When we were overwhelmed with calls for emergency food in the first two weeks of the crisis, Foodlink jumped in to provide food boxes. Wegmans and Tops allowed us to shop without quantity limits. ABVI Goodwill offered their loading dock and Medical Motors offered use of their vans and drivers for deliveries. We delivered hot meals funded by the Monroe County Office for the Aging to older adults who normally attended our downtown center.

We pivoted in other ways. While Microsoft Teams was available to us prior to the pandemic, with 75 percent of our staff working from home, learning to use online collaboration and meeting tools suddenly became a necessity. We embraced technology further by offering our menu of workshops for older adults and caregivers online.

Although the COVID-19 crisis comprised just two weeks out of an otherwise busy and successful fiscal year, we do highlight some of our

work in this report. We also highlight what occurred “BC – Before COVID.” For example, the map on page 19 shows how we’ve extended our service reach throughout New York State, and an article on page 4 notes the honor of a national award for the ways we are integrating our work with medical systems of care.

I think we’ve all learned to be grateful for our way of life before COVID-19. We are grateful we have world class medical care for those who need it. We are very grateful our community cares.

Be well,

A handwritten signature in black ink that reads "Ann Marie Cook".

Ann Marie Cook
President/CEO

“It was not only moving to help homebound older adults; it was so very eye-opening. I have such an appreciation for our social workers who work every day to help those less fortunate, isolated, afraid and lonely. Being on the ‘front lines’ for the first time, I am seeing older adults who have little food, no transportation and are dealing with other illnesses. It is heartbreaking.” —Lifespan staff member

spotlight

Service Spotlight

How Our Pooled Trust Benefits People with Disabilities

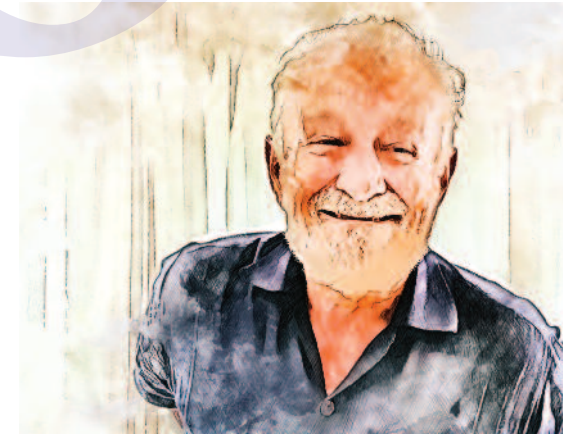
James is a 73-year-old developmentally disabled man whose mom died without planning for his care. Although she left the house and half of her financial resources to James, this small inheritance meant he would have to pay Medicaid \$830 a month as a cost share for continued coverage – coverage he needs because he functions as a 6-year-old. James' brother called Future Care Planning Services for help with the situation.

Future Care Planning Services, a joint program of Lifespan, the Al Sigi Community of Agencies and the Arc of Monroe, helps families plan for the care of a family member with a disability. A corollary to Future Care, the Community Pooled Trust was launched in 2009 because beneficiaries of programs like Supplemental Security Income (SSI) and Medicaid can lose their benefits when they come into an inheritance, receive money in their own names from an accident settlement, or merely accumulate too much money in a bank account.

Our recommendation was for James to join the Community Pooled Trust. This means his Medicaid cost-share goes into the trust, and he can use those funds to pay for care and living expenses. Because he needs 24/7 care, we also enrolled James in the Nursing Home Transition and Diversion Waiver program which pays for in-home assistance at a lower cost than nursing home care. Future Care Planning Services and the Community Pooled Trust helped James access public health assistance and remain in the only home he has ever known.

About the Community Pooled Trust

The trust is designed to supplement the beneficiary's basic needs but not supplant the public benefits that are available to provide those basic needs. It is an Irrevocable Trust. Individuals who are disabled as defined in Social Security Law Section 1614(a) (3) [42USC 1382c (a) (3)] are eligible to participate. There are no funding restrictions with respect to an individual's disability, ethnicity or religious beliefs. A disability determination from the Social Security Administration or Department of Human Services (Medicaid) office is required.



Examples of things the trust can pay for:

- The continuation of family traditions;
- Resources needed to allow the person with a disability to pursue hobbies;
- Education;
- Home repairs;
- Computers that facilitate communication
- Adaptive and medical equipment not covered or reimbursable through other insurances.

We accept participants from Monroe, Genesee, Livingston, Ontario, Wayne, Seneca counties.

Highlights

Highlights

Lifespan Wins National Award for Excellence and Innovation

Lifespan's Community Care Connections service received the Archstone Foundation's National Award for Excellence & Innovation. This annual award was created in conjunction with the Aging & Public Health Section of the American Public Health Association. It serves to recognize best practice models in Gerontology and Geriatrics and is given to innovative programs that effectively link academic theory with applied practice in public health and aging.



Lifespan staff saw the need to close gaps in care for medically frail older adults experiencing multiple emergency department visits and hospital readmissions. Lifespan created the Community Care Connections (CCC) pilot program in 2015 with support from the New York State Department of Health. The goal of the project was to prove that integrating traditional community-based services through partnerships with healthcare providers positively affects cost, quality, and patient and physician satisfaction.

The newest evaluation data shows the Community Care Connections service is reducing hospitalizations, ED visits and observation stays for older patients. In a cohort of 1,352 patients, hospitalizations decreased by 21%, ED visits by 29% and observation stays by 23%.

Honoring Female Veterans

For International Women's Day, the Retired and Senior Volunteer Program (RSVP) at Lifespan, hosted, "Sisters in Service," a tribute to local female Veterans and first responders. RSVP member, Joy Underhill, artistically portrayed stories of service by women in a touching photographic display. The event was held in collaboration with CompeerCorps and the Rochester Museum and Science Center. Sisters in Service is one of many ways RSVP at Lifespan supports Veterans and military families. In 2019 RSVP hosted holiday parties for the local families of NY Army Reserve National Guard, Unit C Company 1-171st Aviation Regiment (MEDEVAC). 44 soldiers were deployed to Afghanistan in 2019. RSVP is funded by the Corporation for National & Community Service.





Lifespan's COVID-19 Crisis Response

These are just a few of the ways Lifespan responded to the COVID-10 emergency.

Lifespan's "food warriors" responded daily to up to 25 emergency calls for food and other staples. We purchased groceries, gratefully accepted donations of groceries and delivered boxes and bags of food within every city neighborhood and in every suburb.

In partnership with Foodlink and Medical Motors, we delivered boxes of food three times a week to more than 2,000 older adults in just six weeks. In partnership with the Monroe County Office for the Aging, we also delivered hot meals with the help of volunteers from the Police Exam Career Prep class.

To combat the feeling of isolation for older adults, Lifespan distributed 150 "JOY FOR ALL" robotic companion cats and dogs to older adults in Monroe County. They were supplied by the New York State Office for the Aging. We also matched volunteers with over 200 older adults for friendly phone calls. Nursing home residents received cards and letters from community members who dropped them off at our office.

We emailed and mailed letters about how older adults were going to receive the federal government's stimulus payments to more than 3,000 clients.

We uploaded "how-to" videos to our COVID-19 webpage thanks to Daniel Jones (www.danielteaches.com) covering topics like how to use online shopping apps like Instacart and how to use online conversation apps like Zoom and Messenger.

Project Uplift

Project Uplift is an initiative of the United Way, funded by ESL, to get critical funds directly to people in poverty and to the working poor. Lifespan received \$92,000 to provide limited financial support for older adults for the purchase of necessities.

In three months, we helped 106 older adults, dispersing \$42,000 of the \$92,000 grant. Our care managers referred clients who needed assistance with rent, utility bills, furniture, car repairs, medications, adaptive equipment, moving fees, hearing aids, televisions, hot water tanks, etc. During the first two weeks of the COVID-19 crisis, an additional 100 older adults received help with food and medication purchases using Project Uplift funds.

“Thank you so much for assisting our patients with the grant. Roberto is very appreciative and happy with his bed and dresser, and absolutely beyond words because he received enough food and hygiene products to hopefully affront this crisis. Both patients receiving funding stated they have never received help in such abundance like they did from you and your agency. I did tell them you were superheroes in disguise.” Care manager from Anthony Jordan Health Center

Launching a National Elder Justice Network

Lifespan participated in launching a National Network of State Elder Justice Coalitions (NNSEJC) to focus on elder abuse detection, prevention, and intervention. The network sponsors quarterly virtual membership meetings at which a featured state coalition makes a presentation about its mission, structure and current activities, a policy issue is discussed, and members share information. The NNSEJC also participates in advocacy efforts through membership in the National Elder Justice Coalition. As a founding member and a participant on the NNSEJC, Lifespan helps to facilitate communication among state coalitions, promote the formation of new coalitions and elevate their collective voice to influence policy and the direction of elder abuse and elder justice issues at a national level.



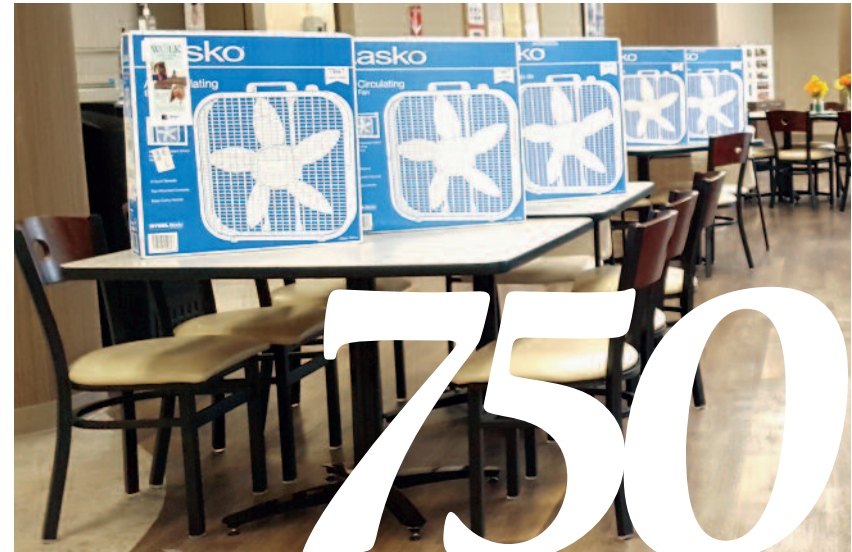
How We Helped by the Numbers

122
volunteers

122 volunteers helped 455 older adults with ongoing financial management by assisting with in-home billpaying and budgeting tasks. This helps older adults remain living independently.

87%

Lifespan's Geriatric Addictions Program (GAP) helped 87% of clients achieve abstinence/decrease in abuse of alcohol/drugs. The program co-hosted a one-day conference on opioid addiction among older adults for healthcare professionals.



During a heatwave in July, Lifespan gave out 750 fans to older adults without any other means of cooling.

33

Lifespan served as legal guardian for 33 older adults who lack the capacity to make their own decisions.

5,522

5,522 people received one-on-one guidance about Medicare and health insurance options.

4,374

4,374 attended one of our Medicare 101 workshops.

1,685

Lifespan expanded services for families caring for a love one with Alzheimer's disease and other dementias four years ago.

In 2019/20 we assisted 1,685 caregivers.
2,354 hours of respite were provided.

508

508 volunteer drivers provided 21,696 one-way trips for medical and other appointments.

870

Minor home modifications can help prevent falls. Our Home-Safe-Home service did modifications in 870 homes.

293

Lifespan manages the NYS Caregiving & Respite Coalition. We hosted the 2019 ARCH National Respite Conference in Buffalo for 293 people from 39 states.



To increase socialization for older adults, Lifespan operates gathering spots within three YMCAs where older adults find friendship, activities, education and fun. 2,211 people 55+ participated and 75% told us their overall well-being improved. 86% made new friends. The average age is 73.

2,243

The Upstate Elder Abuse Center at Lifespan conducted educational presentations about the signs/symptoms of elder abuse for 2,243 individuals. Financial exploitation is the most prevalent form of abuse. The center also has established operational E-MDTs (Enhanced Multidisciplinary Teams) in 39 New York State counties.

52

volunteers

The Long-term Care Ombudsman program's 52 volunteers provided

6,066

6,066 hours of service in nursing homes and adult care facilities. The top complaints were about discharge, dignity/respect and resident preferences/choices.

61,316

Lifespan recruits, matches and places people 55+ in volunteer roles in many nonprofits. 627 volunteers provided 61,316 hours of service to nonprofits in Monroe and Livingston counties.

thanks

How a Celebration of Aging Became a Celebration of Thanks

We were days away from hosting our 24th Celebration of Aging with 1,600 people at the Convention Center when the COVID-19 virus forced us to cancel our annual fundraiser. Over the next days, we contacted sponsors, table supporters and our contracted guest speaker, John Quiñones.

A Celebration of Thanks!

We are extremely thankful because almost every organization and business donated their full sponsorship or table payment to Lifespan. Additionally, our guest speaker, John Quiñones, graciously returned our payment.

Our thanks and gratitude to:

PRESENTING SPONSOR



And event co-chairs
John and Lauren Doyle

MEDIA SPONSOR



HERO SPONSORS



ROLE MODEL SPONSORS

The Bonadio Group
Excellus BlueCross
BlueShield
Home Leasing Construction
Laborers' Local 435/LECET
Rochester Business Journal
Mark IV Enterprises
Summers Foundation
Touching Hearts at Home

TAKE IT ON! SPONSORS

Ames Amzalak Memorial Trust
Christopher Communications
CPL
HCR Home Care
HealthDirect/Kinney Drugs
Foundation
Highland Hospital
Jewish Senior Life
Lawley
Panther Graphics, Inc.
PeerPlace Networks, LLC
Rochester Management Inc.
Rochester Regional Health
The Village at Mill Landing
The Village at Unity
Woods Oviatt Gilman LLP

CIRCLE OF FRIENDS SPONSORS

AETNA Medicare Solutions
 Alstom Signaling Foundation
 Alzheimer's Association,
 Rochester/Finger Lakes
 Boylan Code LLP
 Brown & Brown of NY, Inc.
 Episcopal SeniorLife
 Communities
 Friendly Senior Living
 The Gables of Brighton
 Harris Beach PLLC
 Heathwood Assisted Living
 & Memory Care
 Jocelyn Hicks Brody, M.D.
 Kroll Law Firm, LLP
 The Landing of Brighton
 Lifetime Care
 Nixon Peabody LLP
 Optum
 Paychex
 Peregrine Senior Living
 at Crimson Ridge
 Rochester Gas and Electric
 Corporation
 Ron and Kelly Ricotta
 Sidney Hillman Health Center
 Special Care Systems
 St. Ann's Community
 Toshiba Business Solutions
 Underberg & Kessler LLP
 UnitedHealthcare Medicare
 Solutions
 UR Medicine Home Care

TABLE SUPPORTERS

AARP
 Accountable Health Partners
 Alesco Advisors
 Al Sigl Community of Agencies
 ARC of Monroe
 Susan Byrd, Westover Strategy
 Canandaigua National Bank
 Catholic Family Center
 Christa Construction LLC
 Clarity Recruiting and Career
 Management
 Cobb's Hill Manor
 Assisted Living
 Common Ground Health
 Cook Communications, LLC
 DePaul
 Dixon Schwabl
 Tere and Craig Dominas
 Dutcher & Zatkowsky Rochester
 Elder Law
 EZaccessMD
 Friends and Family of Taine Vinci
 Gallina Development Corp
 Genesee Health Facilities
 Association
 Greater Rochester Area
 Partnership for the Elderly
 (GRAPE)
 GRIPA/Cognisight
 Hearing Loss Association of
 America-Rochester Chapter
 Brian Heppard MD and
 Cynthia M Heppard

The Highlands at Brighton/
 The Highlands Living Center
 Highland Hospital Department
 of Medicine
 Vicky Hines, Lifespan Board
 Member
 Art & Barb Hirst
 In Honor of Roseanne Risio
 & Rocco Vivenzio, MD
 Kaufman-Sheldon Group
 Merrill Lynch
 Kirkhaven
 Landsman Development
 M&T Bank
 Manning & Napier
 MedAmerica
 Med-Scribe, Inc. Healthcare
 Recruiters
 Morgan Stanley
 Pittsford Federal Credit Union
 ProNexus LLC
 Reliant Community Credit Union
 Saratoga Pharmacy
 Debra and Jamie Soley
 Strazzabosco Family
 St. John's
 Upstate National Bank
 UR School of Nursing
 UR Medicine Department of
 Orthopaedics and
 Rehabilitation
 The Division of Geriatrics
 and Aging
 USI Insurance Services
 Wegmans Food Markets, Inc.

**Lifespan
 Board of Directors
 Officers &
 Executive Committee**

Chair
 Mark McDermott
 Vice Chair
 Vicky Hines
 Treasurer
 Chris Martusewicz
 Secretary
 Jane Shukitis
 Ex-Officio
 Patrick Glavey
 Directors
 Michael Burke
 Peter Bruu
 Susan Byrd
 Jim Condello
 Tere Dominas
 Beverly Fair-Brooks
 Brian Heppard, M.D.
 Michael Kaufman
 John Lynch, Jr.
 Robert McCann, M.D.
 Pennie McNulty
 Bill Naylor
 Lisa Powers
 Diane Quinlisk
 Stephen Ryan, M.D.
 Jaime Soley
 Yvette Tehan
 Roberta Van Winkle
 Honorary Board Member
 R. Carlos Carballada
 Trustees Emeritus
 Ralph J. Code, III, Esq.
 Art Hirst
 Patty Phillips
 Richard Macheimer, Ph.D.



WOW

Staff WOW! Award Winner

Lifespan’s mission is successfully carried out every day because of the commitment and expertise of our staff. In addition to their passion for their work, Lifespan staff always take time to recognize excellence in their colleagues’ work—living the “take it on with Lifespan” mission. The monthly WOW! Award is a staff-nominated recognition, and each year, we choose our annual WOW! Award winner.

Karin Nowicki, MSW, is our annual WOW! honoree.

WOW! Award winner, Karin Nowicki

Lifespan Senior Management

President & CEO
Ann Marie Cook

Chief Operating Officer
Jody Rowe

VP Program
Paul Caccamise

Director of Finance
Karl Hagen

VP Marketing & Communications
Mary Rose McBride

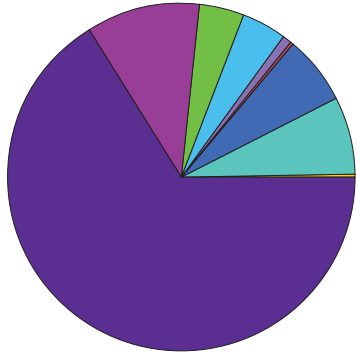
Director of Human Resources
Susan Less

Karin received a referral from a nurse care manager at a primary care office for a patient, Mr. C. The nurse was concerned because Mr. C. lives alone and reported he’s been without water. He is medically complex and admitted to struggling to maintain his home. Karin knew from asking safety questions that the condition of the house was a concern but what she found was more than she bargained for. The house was in extreme disrepair and infested with insects, rodents, squirrels, mold and evidence that this gentleman could no longer attend to his personal care. The client admitted there had been no running water for about ten years and that his furnace was broken. He said he had no one to help him. Mr. C. was willing to move but to where? And could this get done before cold weather hit.

Karin was ready to “take on” this challenge. She facilitated Mr. C. gathering his financial statements, and medical documentation. She arranged for transportation to his appointments and for tours of assisted living facilities. She found a realtor, a car dealer willing to buy the car and helped him move into the facility of his choice. He did not have one stitch of clean clothes so Karin (with approval and access to funds) shopped for him so he would look nice when he moved in. One of the first things Mr. C. said when he entered his new home was, “Hey, running water!” and gave her a big thumbs up. Thank you, Karin, for going the extra mile to help someone very much in need.

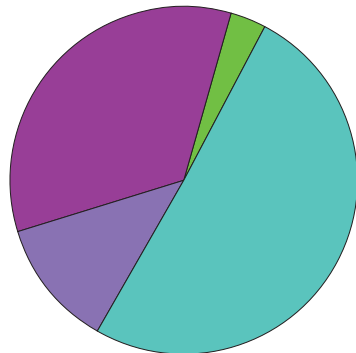
Financials

April 1, 2019 through March 31, 2020



REVENUE

Government Grants	\$ 7,619,706
Non-Government Grants	\$ 1,243,509
Fee Income	\$ 462,259
Donations/In-Kind	\$ 501,746
Investment Gain	\$ 88,920
Interest Income	\$ 26,473
United Way	\$ 738,689
Releases from Restriction	\$ 814,397
Miscellaneous Income	\$ 30,259
Total Unrestricted Revenue	\$ 11,525,958



OPERATING EXPENSES

Salaries	\$ 5,807,613
Fringe Benefits	\$ 1,369,315
Operating	\$ 3,924,415
Rent and Utilities	\$ 380,640
Total Unrestricted Expenses	\$ 11,481,983

Excess of Support and Revenue over Expenses before Equity in Earnings of Future Care Planning \$ 43,975

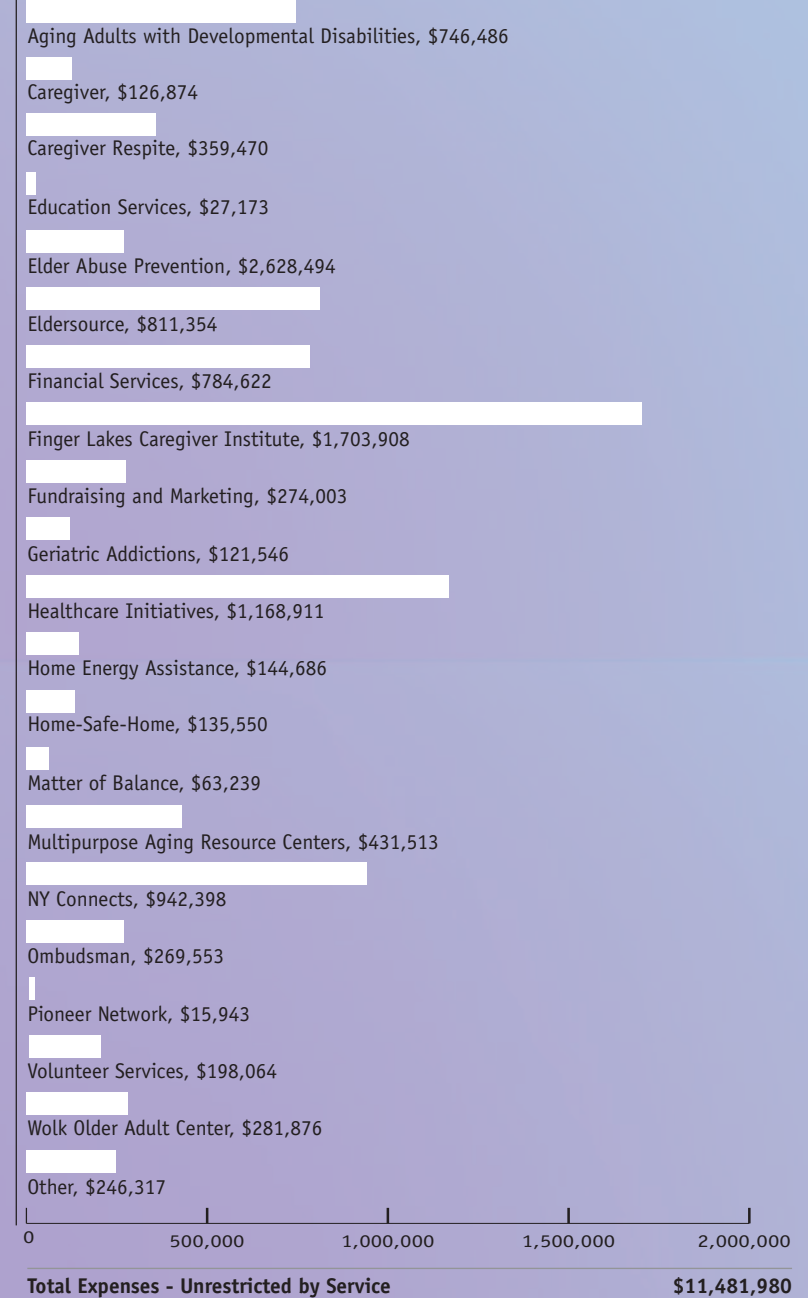
Total Unrestricted Assets	\$ 5,250,036
Total Unrestricted Liabilities	\$ 1,565,346
Unrestricted Net Assets	\$ 3,684,690

FUNCTIONAL EXPENSES

Program	\$ 9,634,247
Management & General	\$ 1,573,693
Fundraising	\$ 274,043
Total Expenses	\$ 11,481,983

Please Note: These numbers are unaudited and do not reflect Future Care Planning.

EXPENSES BY SERVICE



2019-20 Annual Donors

Founder's Council

Daisy Marquis Jones
Foundation
John & Deborah DiMarco
Doyle Security Systems &
Medical Monitoring
ESL Federal Credit Union
Joan Feinbloom**
Jose & Eileen Fernandez
The Hallowell Fund at
RACF
Jocelyn Hicks-Brody, PhD
Art & Barb Hirst
Home Leasing
Construction
Laura Humphrey
The William & Sheila
Konar Foundation**
Touching Hearts at Home
UR Medicine
William G Schilbe Family
Wealth Trust

Chairman's Circle

Alan John & Mary
Bartholomew, Sr
CPL
Anthony & Carol
DiMarzo**
Dutcher & Zatkowsky
Rochester Elder Law
Excellus BlueCross
BlueShield
Farash Foundation
Jewish Senior Life
Laborers Local 435/LECET
MVP Health Care
Hilda Satran
St John's
Summers Foundation, Inc

President's Circle

A&J Pharmacy LLC
AARP
Leslie Abramovitz
Susan Acker
AETNA Medicare Solutions
Robert H Albach &
Raymond F Jones
Alstom Signaling
Foundation
Henry & Joanne Altland
Alzheimer's Association,
Rochester Finger Lakes
Region
Ames-Amzalak Memorial
Trust
Anonymous
Albert & Eileen Baitsholts
Brown & Brown of NY, Inc
William Buckingham
Susan Callin
Thomas & Ann Caprio, MD
Centers Health Care
Gregory & Suzanne
Chambery
Christopher
Communications
G Thomas & Barbara Clark
Cobb's Hill Manor
Assisted Living
Elizabeth Colasurdo
Thomas & Cathleen Combs
Compeer Rochester
Ann Marie Cook**
Warren Crandell
Richard & Allison DiMarco
Craig & Tere Dominas
Episcopal SeniorLife
Communities
ESL Trust Services, LLC
Estate of Gertrude E
Langen
EZaccessMD
Friendly Senior Living
John & Susan Geraci
Joseph Gersitz
Patrick Glavey
Greater Rochester Area
Partnership for the
Elderly
Harris Beach PLLC
HCR Home Care
Health Direct/Kinney
Drugs Foundation

Heathwood Assisted
Living & Memory Care
Brian Heppard, MD &
Cynthia M Heppard
Highland Hospital
Louis Iacona
Algis Januska
Margaret Joynt
Michael & Karin Kaufman
John & Mary Knowles
Myron & Ann Kowal
Robert Kreilick
Kroll Law Firm, LLP
The Landing of Brighton
Louis Langie, Jr
Lawley
Wayne & Beverly LeChase
Legacy Financial
Planning LLC
Lifetime Care
Richard Machemer, Jr, PhD
Stephen & Ann Martin
John & Carol Matteson
Robert McCann, MD
Kevin McCormick
Harry & Linda Messina
Stephen & Jo Anna Meyer
Scott & Susan Miller
Morgan Stanley
Jason Mull
Robert & Jacquie Nasso
Nixon Peabody LLP
OPTUM
Richard C & Mary Anne
Palermo
Vincent Palese, Jr
PeerPlace Networks, LLC
Jacqueline Potter
The Pylyshenko
Foundation
Diane Quinlisk
Ron & Kelly Ricotta
Rochester Gas & Electric
Corporation
Rochester Management,
Inc
Bernice Rosenberg
Thomas & Ellen Rusling
Sara Senour
Sidney Hillman Health
Center
Special Care Systems
Catherine Sperrick
Howard Spindler
St Ann's Community
Walter Stewart Beecher
Toshiba Business Solutions
Robert & Dianne Tucker

UnitedHealthcare
Medicare Solutions
Upstate National Bank
USI Insurance Companies
Waldron Rise Foundation
Westminster Barrington
Foundation
Betty Wilson
Carol Wischmeyer
Woods Oviatt Gilman LLP
Daan Zwick

Leadership Donors

AANLTC
Barbara Abraham
Accountable Health
Partners
Al Sigl Community of
Agencies
Alesco Advisors
Ameriprise Financial
Sandra Baldwin
Martin & Margaret Banton
Lawrence & Linda Becker
The Bonadio Group
Alan Cameros
Donald Campbell
Canandaigua National
Bank & Trust
R Carlos & Virginia
Carballada
Catholic Family Center
Clarity Recruiting &
Career Management
Comedy @ the Carlson
Common Ground Health
Cook Communications, LLC
DePaul
Richard & Alberta DiMarco
Dixon Schwabl
EverCare Choice
ExxonMobil Foundation
Fidelis Care
Christine Fritsch
John Frost
Gallina Development Corp
Richard & Josephine
Gangemi, MD
Sharon Gardner
Genesee Health Facilities
Association
Robert Growe & Elaine
Dalconzo-Growe
Jeffrey & Lynne Halik
William Hall, MD

Hearing Loss Association
Rochester Chapter
John & Molly Hedges
Highland Hospital
Department of Medicine
Victoria Hines
Norman Horton
Howe & Rusling
Kaufman/Sheldon Group
Merrill Lynch
Kirkhaven
Landsman Development
Earl & Mary Jean Lenhard
David & Patricia Long
M&T Bank
Rebecca Marina
James Marron
Masonic Service Bureau of
Greater Rochester NY
McCormick Transitional
Care Center
MedAmerica
Med-Scribe, Inc
Thomas & Robin Merkel
US Congressman Joseph D
Morelle
Richard Morris
The Nurse Connection
Staffing
Peregrine Senior Living at
Crimson Ridge
Ken & Anne Pink
Pittsford Federal Credit
Union
Rene Reixach
Reliant Community Credit
Union
Frank & Gail Richeson
Rochester Area Community
Foundation
Rochester Business
Journal
Geoffrey & Janet
Rosenberger
Bud & Joan Rusitzky
Stephen & JoAnne Ryan,
MD
William & Catherine Sabia
Saratoga Pharmacy
William & Evelyn Smout
Debra & Jamie Soley
Robert & Jacqueline
Sperandio
St John Fisher College
Longevity Games
Cynthia Steltz
Strazzabosco Family
Thomas & Rose Swartz

University of Rochester
School of Nursing
UR Department of
Orthopaedics &
Rehabilitation
UR Medicine Geriatrics
Group
Roberta Vanwinkle
Richard & Susan Versluys
Taine Vinci
Kathryn Vivenzio
Richard & Charis Warshof
Wegmans Food Markets,
Inc
Fran Weisberg & Tom Toole
Ethan & Janet Welch, MD
Westover Strategy
Xceed Financial Credit
Union
YMCA of Greater Rochester

Samaritans

Peter Abdella
Betty Abercrombie
Michel & Mouna Abou-Eid
Karen Accorso
Lena Accorso
Charles & Evelyn Adams
Leo & Mary Adamski
Thomas & Rosanne Agati
Geraldine Agnello
James & Lorraine Ahearn
Suzanne Ahrens
Jack & Faith Aiello
Diane Akers
Jeffrey Alexander
Frankie Allen
James & Deborah Allen
Ivette Alvarez
JoAnn Alwardt
AmazonSmile Donors
Diane Amedeo
Calvin & Catherine Ames
Betty Andelman
George & Lorraine
Anderson
William Anderson
Patria Andreano
Carrie Andrews
Paula Andrews
Margaret Angelone Horton
Carol Anjard
Lido Annucci, Jr
Benita Aparo
Ellen Apetz
Milford Apetz

Joseph & Annette Arbia
Arc of Monroe
Gerald & Betsy Archibald
Michael & Cathy
Armbruster
Felice Armignacco
Lauren Arva
Stephen & Paula Arvan
Jeffrey Arywitz
Marilyn Augino
Jan August
Ronald & Mary Ann
Aument
Edwin Austin
Mary Austin
Rosemary Bachman
Reinhold & Genevieve
Bachmann
Caroline Bailey
Jacqueline Bailey
Sue Baker
Raymond Baldassarre
Juanita Ball
Ann Marie Balzano
David & Rachel Bandyck
Jean Banfield
Mark & Katherine Bankes
Carole Barattini
Richard Barbato
Margaret Barber
Carol Barkauskas
Josephine Barnes
Lorie Barnum
Charles Basch
Mary Bauer
Gail Bauerschmidt
Jeanine Beahan
Jillian Beaman
Harold & Nancy Beaney
Gerald & Joan Beaudin
Cindy Becker
Howard Beckman, MD
Rosalie Beckwith
Nancy Behrens
Eileen Beikirch
Bruce & Dianne Beisheim
John & Elaine Bell
Eric Bellmann
Vera Bellows
Joann Bennett
Richard Berend
Charles Bergener
Roland & Lois Bergeron
Mary Berk
Margaret Berliant
Sherry Bernreuther
Marsha Bernstein
Alice Bery

Helmut Bescherer	Bernice Burroughs	Companion Care of	Elizabeth Decastro	Gloria Emmanuel	Patricia Fullerton	Philip & Erika Griffin
Susan Bianchi	Richard Butler	Rochester	Kelly DeFranco	Kellie Engelmeier	Donald & Marilyn Furey	Dianna Gross
Stephen Biklen	Raymond Byrne	Katherine Congelosi	Randy DeFrank	Norine Enright	Vitaliano & Rosa Fusco	Ralph & Linda Guary
Dianne Bills	Paul Caccamise	Cheryl Conley	John Delibert	H Scott & Linda Enter	Robert & Muriel Gabbey	Kery Guercio
Dayle Bird	Anthony & Ellyn Caiazza	Phyllis Connelly	Thomas Della Villa	Epilepsy Pralid	The Gables of Brighton	Kenneth & Dianne
Russell Bird	Robert & Carol Calus	Patrick Connolly	Ronald & Janice Delles	Antoinette Ercolano	Timothy & Barbara Galli	Guggino
Maxine Bittker	Catherine Cameron	Corinne Conover	Mary Delorme	Terry & Diane Erdle	Kathleen Gallucci	Linda Guido
Chrystine Blackwell	Robert Campbell	Katherine Conroy	Linda DeLucia	Erie County Senior	Maureen Galvin	Grace Gullo
Douglas Bobak	Marie Candelora	Annemarie Cook	Maurice & Barbara DeMay	Services	Sharon Garelick	Gail Gutfrucht
Colleen Bober	David Cangialosi	Joan Cook	Albert DeMayo	Robert & Jean Erskine	Ellen Garfinkel	Paul Guyett
Thomas Bober	Karen Cantaben	Linda Cook	Barbara Demler-Kalinna	Judith Esposito	Nancy Garlock	James Haefner
Henry & Inge Boessl	Kenneth & Denise Carl, Jr	Robert & Gail Cook	Mary DePumpo	Vincent Esposito	Stephen Gaudio	Karl Hagen
Carolyn Bogardus	Mary Jean Carlson	Thomas & Maria Cook	Richard & Shirley	Mark & Mary Ann Evans	Bhagwan Gaur	Kathleen Hagen
David Bogdan	Sharon Caron	Anne Coon	DeRuyscher	Evelyn Exman	Dana Gavenda	Margaret Haley
Patricia Bogdany	Susan Carpenter	William & Carol Coons	Ralph DeStephano	Cynthia Fahy	GE Foundation	Dorothy Hall
Eleanor Bollin	Verna Carpenter	Alonzo Cooper	John & Marilyn Devisser	Fancy Th@t Gift & Décor	Elizabeth Gear	Shirley Hall
Anthony & Anna Bonanno	Bridget Carroll	Arlene Cooper	Christopher Dewey	Gregory & Mary Jo Farrell	Carolyn Gebhardt	Sylvia Hall
Barbara Bonsignore	John Carroll	Herman Cooper	Robert & Kathleen Dewey	Rose Faucette	Beverly Geier	Dorothy Halligan
James Borden	William & Donna Carter	Walter Cooper, PhD	James & Carol DeYaeger	Catherine Feldman	John Geier	Cynthia Hamann
Donnette Boucher	Carmelo & Ida Caruso	Janice Corea	Kimberly DeYoung	Genaro Felix	Peter & Adrienne Geiss	Josephine Hamel &
Paul & Minnie Boutte	Robert & Jodi Carville	Patcy Corey	Joseph & Bonnie DiLallo	Barbara Ferguson	Gerald & Donna Genier	Phyllis Cioppa
Patricia Bowden	John Casetta, Jr	Marta Cortis	Gerard & Keiko Dill	Thomas & Lucy Ferraro	George Gering	Robert & Barbara
Shelley Boyd	Arthur Cassidy	Leesa Coutant	Gina Dimonda	Lillian Ferrarone	Esther Germanow	Hamilton
Boylan Code LLP	Salvatore & Assunta	Douglas Couture	Mary Dinnan	Kendra Ferries	Robert & Elizabeth Getz	Keith & Annette Hamlin
Mary Jo Brach &	Caternolo	David Cowles	Cheryl Dinolfo	Thomas Fess	Pamela Giambone	Gordon Hammond
Christopher Farnum	Catholic Charities	Tero Cox	Dominic & Elisabeth	Andrea Fettingter	Frank & Jeanette	Carol Hampson
Darlene Bradley	Community Services	David & Constance Craig	DiPonzio	Christopher Fina	Giancursio	Sharon Hanks
Howard Brand	Guy Cenname	Gary Craig	Janeth Dixon	Eugene Fina	Cynthia Gibson	Thomas & Sarah Harner
Mary Breuer	John & Dorothy Cevicelov	Donald & Elison Cramer	Robert & Rita Dobbin	Jeanette Fina	Virginia Giesow	Yvonne Harrell
Jerry Briggs	Anna Cha	John & Ann Crandall	Roger & Marie Doell	Howard & Marlene Fine	Gary & Carmela Gilbert	Phyllis Haring
Michael Brisson	Catherine Chabrier	Lia Crede	John Donahue	Finger Lakes Performing	Richard & Joyce Gilbert	Cathy Harris &
Richard & Virginia Britton	Emily Chapman	Isabell Cristo	Sandra Doorley	Provider System	Ronald Gillenkirk	Larry Broser
Kevin Brogan	Jamie Charters	Charles Crockett	Valerie Doyle	Bernard & Dorothy Fischer	Carol Glaess	Richard & Vicki Harrison
Christine Brooks	Jon Chernak	James Crockford	Laurel Drake	Dolores Fisher	Robert & Mary Gleason	Howard & Irene Hartley
Amanda Brown	Donald Chesworth, Esq	Michael & Marilyn Cronin	Daniel & Mary Draper	Gregory Fischer	James Gluchowicz	David & Rosann Hartman
Charles Brown	Vasant Choksey	Richard & Geraldine	Donald Drees	Marvin & Eileen Fishman	Douglas Godard	James Hartman
Jennifer Brown	Marilyn Christian	Crooker	Raymond Dreher &	David Fitch	John Godfrey	Darka Hawryshkiw
Joan Brown	Irene Churkian	Marie Cucchero	Elaine Tunaitis	Linda Fitzgerald	Lilla-Loretta Goff	Nancy Hayes
Jordon Brown	Angela Cieri Meindl	Peter & Betty Cumbo	Robert & Diana Dressler	Betty Fitzmorris	Deborah Goldman	Joseph & Sandra Heberle
Robert Brown	Karleen Cirulli	Norma Cummings	Edward & Susan Drexler	John & Marline Fitzpatrick	Lynda Goldstein	Martin Heit
Renee Brownstein	Alan & Sandra Citarella	Anna Cunningham	Harold & Doreen Driscoll	Brittany Flanagan	Eugene & Eleanore	William & Carol Helferich
Gail Brozek	Kevin & Ann Marie Clar	Brian Curran, Esq	Kathleen Dudley	James Flanagan	Golomb	Jerome Henderson
Samuel Brundage, Esq	Bishop Matthew Clark	Kenneth & Nancy Czamara	Patricia Duffy	Suzanne Flanigan	Barry & Nancy Gombert	Robert & Mary Ann
Ronald & Beth Brust	Gregory Clark	Gary & Deborah Czerkas	Charles Dufresne	Andrea Fleishman	Linda Gordon	Henley
Richard & Juliana Buck	Mary Lu Clark	Katherine DaCosta	John & Anne Duggan	James & Joyce Foom	Joan Gourley	Henrietta Senior Center
Margaret Buckel	William & Cynthia Clark	Patrick & Victoria Dalberth	Shirley Dunlap	Mary Ellen Ford	Mary Jane Gow	Hans Herdegen
Michael Buckley, Esq	Mark Clausen	Joseph D'Amico	Eileen Dutton	Renee Forgensi Minarik,	Virginia Graham	Alfred & Janet Herman
James & Hollis Budd	Charles Cleary	Timothy Datz	Robert & Barbara	Esq	Allison Granata	Ruth Hetland, MD
Michael Buddendeck	Wende Cleary	Jodi Davies	Eckelberger	Mary Ellen Forgione-Hecht	Grandma's Helpers LLC	Anthony & Jenifer Higgins
Jack & Doris Bundschuh	Kathleen Cloonan	Bennett & Carol Davis	Alice Eddy	Frank Formicola, Jr	Michael & Linda Graney	Janet Hilliard
Sidney Burd	Katherin Cobbett	Marvin & Marcia Davis	Joan Edelstein	Sandra Frankel	Mark & Mary Graupman	Mary Hilling
Wayne & Arlene Burdett	Debra Cody	Betty Davison	Mary Eichorn	Evelyn Frazee &	Patricia Gray	Erwin & Marilyn Hipp
Norene Burdine	Irving & Barbara Cohen	David & Anne Day	Mark Eisenberg	Thomas Klonick	Greece FISH	Anita Hoffeuffer
Joseph & Nancy Burke	John Coiro	Ellen De Buono	Jill Eisenstein	Barbara Freeman	Larry & Cheryl Green	Julie Hoffmann
Michael Burke	Richard Colgan	Elise De Papp, MD	Elderwood Health Plan	Ruth Freeman	Susanne Greenfarb	Geraldine Hohn
Blandine Burks	Christine Collier	John & Ricki DeBaun	Donald & Joanne Eldridge	Karyl Friedman	Benita Greenfield	Frederick & Rosanne
Michael & Mary Burns	Joy Collins & Maggie Finn	John & Margaret Debesis	Maria Elmer	Debra Frink	Arthur Greenland	Holbrook
John & Antoinette Burr	Sherry Colon	Patricia Decaro	Eve Elzenga	Gretchen Fuller	John & Lynda Greve	Marguerite Holderle

Gail Hollingsworth	Gloria Kaplan	Caryn Laspino	Gerard & Rita Magin	Paul & Janet McKenna	John Munt	PEKO Precision Products
William Holthoff	Daniel Karin	Sandor & Anna Laszlo	Keith & Elizabeth Mahar	Alicia Mckenrick	Julie Murawski	Joseph & Sandra Pennise
Carol Hondorf	Kenneth Kassel & Nancy	Denise LaTart	Nancy Maher	Edith Mcklveen	Maureen Murphy	Melissa Pennise
Marilyn Hook	Gambacurta	Monte & Nancy Lavine	Paul & Susan Mahler	Alexander McLaughlin	Mary Beth Musto	Christopher & Mary Perna
Anne Hooper	Bruce & Marianne Katz	William & Cheryl Lavoie	Richard & Barbara	Mary Jo McMannis	Robert & Helen Myers	Diane Pero
Daniel Hoover	Cheryl Kauffman &	Richard & Roseanne	Richard & Barbara	Pennie McNulty	Thomas & Mary Myers	Barbara Perrault
Alvera Horak	Amy Hay	Lawrence	Mahoney	Margaret Mead	Janice Nagle	Libby Perrin
Rance & Joan Horton	Edward & Ann Kelly	Brian & Linda Layton	Mark Maimone	Doris Meade	Thomas & Karen Napoli	Marie Perrone
Cecelia Horwitz	Elizabeth Kennedy	Dianna Leach &	George Malachowsky	Medical Motors Service	Nancy Nealon	Felicia Perry
Gail Hubbard	Sally Kenyon	Gregory Bell	Donald & Lucille	of Rochester	Polly Nelson	Irena Pesis-Katz
Joseph & Ruth Hubner	Eugene & Diane Kepple	Charles & Joyce Leary	Malczewski	Irene Mele	Martin & Thelma Nemeroff	Gerald & Patricia Peters
Beverly Hudson	Shirley Kerwin	Diane Leas	Anthony & Judith Malone	Christopher Melito	Thomas & Veronica Nescot	Sarah Peters
Florence Huff	Judith Kiehl	John & Teresa Lehr	Kristin Malone	Arne Melsom	Network For Good	Daniel & Virginia Phelps
Mary Lou Huff	Tracey Kilgras	Rosebud Leonard	Martin & Ruth Maltz	Carol Merkey	Isobel Neuberger	Arlene Phillips
Kerry Hughes	Donald & Pamela Killaby	Christine Leone	Berge & Elisabeth	Carmel Merrill	Philip Neuer Jr &	Mary Piccone
Laurie Hunt	Robert & Mary Kime	David Lepp	Mangerian	Suzanne Meyerowitz	Jeanette Neuer Hauck	Gregory & Maureen Pilato
William Hunt	Leita King	Stephen & Georgette	Manning & Napier	Betty Middlebrook	Daniel & Laurie Neumann	Kathleen Pilletteri
Robert Hunter	Retha King	Lesnak	Advisors	Ken Mihalyov	Dina Nicholas	Daniel Platten
Dean Hutchinson	Duane & Loretta Kirk	Carrie LeStorti	Mary Kay Manns	Rich & Carol Mileo	Carol Nickolini	Carol Ann Podgorski, PhD
Michael & Carolyn Hutton	David & Marilyn Klass	John & Jennifer LesVeaux	Barbara Mantei	Andrew & Patty Miller	Theodore & Kathryn Nixon	Patricia Polidor
Ibero-American Action	Marcella Klein	John & Janet Leversion	Cecilia Manuli	Duane & Ida Miller	Barbara Noble	Betty Lou Pollock
League	Carol Klinger	John Levey	Charles & Sharon Marang	Glenn & Suellen Miller	Mary Noce	Mary Polvino
iCircle	Gloria Klink	Jane Levin	Raquel Marchenese	Evelyn Marchner	David & Kathleen Nolan	James & Virginia Poole
Christine Ide	Anne Kloc	Rose Levin	Evelyn Marchner	Teresa Marconi	Dennis Norris	Michael Poole, Jr
Virginia Illi	Dana & Karen Knight	Levy Golf, LLC	Elia Marcus	Teresa Marconi	Mary Northington	Bruce Popper
Mary Illingsworth	Joan Kohout	Katherine Lewis	James Marks	Elia Marcus	Paul Nou	Frank & Carol Porter
Bonnie Ince	Christina Kolankiewicz	Todd Liebert	Mary Jo Marlowe	James Marks	Phillip & Marybeth Nowak	Jovan & Katherine
Betsy Indivino	Sandra Konarski	Katherine Lindahl	Todd & Barbara Marsh	Mary Jo Marlowe	Karin Nowicki	Porterfield
Annie Jackson	Anne Korenstein	Vern & Joan Lindberg	Philip Marshall	Todd & Barbara Marsh	NYS Senate - 56th	Kenneth Posman
Douglas Jackson	Calvin Kotwas	Terrence Linden	Marlene Martrano	Philip Marshall	Senate District	Cheryl Pough
Mercelle Jackson	Mara Kouides	Helen & Susan Lindsay	Arthur Mason	Rosamond Miller	Shirley Oakes & Santo	Dennis & Gail Powell
Phyllis Jackson	Peter & Ruth Kouides	Margaret Lindsey, MD	Victor Mason	Rose Miller	Coniglio	Susan Powell Byrd
Miriam Jacobs	Deborah Kovacic	Cathleen Lindskoog	Arthur & Ellen Maurer	Annette Miller &	Carolyn Oatman	Lister Powers
Susan Jansen	Csaba & Romana Kovacs	Steven & Mary List	George & Adeline May-	Lauren Frank	Pamela Oblein	Susan Powers
Robert Jarvis	John Kramer	John Littwitz	nard	Cheryl Minchella	Roy & Helen O'Connell	Robert Pozniakas
Nathan Jaschik	Joan Krause	Tara Locastro	Mary Maynard	Richard Misgalla	Evelyn Ofsowitz	Randolph & Donna Prader
James & Roberta Jennings	Dona Krebs	Michael Lococo	Barbara Mazzacano	Deloris Mitchell	Edward Olander	Judith Prevratil
Donald & Jeanette	Daniel & Jane Kress	Steven Loiacono	George & Louise Mazzeo	Lynne Mitchell	Order of the Eastern Star	Thomas & Judy Price
Jessmer	Thomas & Catherine Kress	Donald & Mary Ann Lomb	Carolyn McBride	Verner Mize	Chapter #507	Donna Prince
Surendar Jeyadev	Seymour & Norma Kugel	Michael Long	Mary Rose McBride	Helen Mizma	James & Marlene O'Reilly	Elizabeth Printy
Patricia Johns	Arthur Kuh	Margaret Lonnen	William McCleary &	Janie Monroe	Barbara Orenstein, Esq	Donald & Susan Pritchard
Audrey Johnson	James & Angela Kuhn	Mary Ella Loos	Maxine Long	Hildegard Montalvo	Sandra Paddock	Jessica Pritchard
Charmaine Johnson	Mary Lou Kuntz	Lucy Loporcaro-Landry	Mary Ann McClurg	John & Marion	Hillary Paine Hopkins	ProNexus, LLC
Dawn Jones	Donald Kurtz	Dawn Lorenzo	Ann McCrossen	Montstream	Margaret Palma	Shirley Prudom
Richard & Linda Jones	Theresa Kurzawa	Stephen & Deborah	Pamela McCullough	Ann Mooney	Thomas & Dorothy Palmer	Harlan Purdy
Ronald & Theresa Jones	Mary Ann LaCour	Lorgan	Celia McCurdy	Oscar & Staffie Morales	Carla Palumbo	Barbara Puro
Emily Jones & Deborah	Dino & Rosa LaDelfa	Martha Love	William & Kathleen	Daniel & Cheryl Moreno	Wilma Papalia	Cynthia Purzycki
Hughes	Julie LaFave	John Lowery	McDonald	Genevieve Morris	Katherine Park	Marie Quinn
George & Dama Jung	Paul & Cheryl Lamparella	Frank & Cricket Luellen	Ralph & Nancy McGarrity	Karen Morris	Dolores Parlato	Mary Louise Quinn
David & Mary Ann	Hillary Lampell	William Luthin	Richard McGill	Michael & Margaret Morris	June Parlato	Roger & Betty Quinn
Juszkiewicz	Frank Lanasa	John & Laura Lynch	David McGillivray	William & Ruby Morse	L Edith Parris	Barbara Rafoth
Michael & Joanne Kadey	Sandra Lancer	Sandra Lynch	Courtney McGinness	Annette Moscato	PathStone	Kallah Ramphel
Robert & Marilyn Kaiser	Marcia Landgren	Patricia Lynch-Gause	Kathleen McGrath	Peter & Gail Mott	Angelina Pavone	John & Catherine Randall
Jerrold & Naomi Kalnitz	Patrick & Janet Lang	Kathryn Lynn	Deborah McIlveen	Jean Mowry	Frances & Dana Paxson	Durwood & Diana Raplee
Linda Kammer	Christopher Laragy	Winifred Lyons	Betsy McIsaac	Martin Moynihan	Paychex	Lucinda Rapp
Franklin & Ernestine Kamp	Joseph & Olga LaRocca	Leigh & Marion	Barbara McIver	Maryanna Mueller	Paylocity	Richard & Barbara
Angela Kananen	Jeffrey Larson	MacFadden	M Judith McKay	John & Carol Mulligan	Glen & Karen Pearson	Rappaport
Harold & Evelyn Kanis	Lawrence & Randi LaRussa	Neal & Dorothy Madden	Francis & Anne McKenna	Margaret Munch	Patricia Pedeaux Ruda	Alice Raymond

Helen Reagan	Ann Russ	Lawrence Shearer	Dorothy Stimpson	Uniland Development	Paul & Marianne Weiser	Robert & Jean Zarcone
Carolyn Reardon	Rustic Village	Russell & Carolyn Sherman	James & Judith Stinehour	Corporation	Rhoda Weiss	Dennis Zavitz
John & Linda Rector	Ann Ryan	Marsha Shifman	Frederick Stock	United Technologies	Linda Weissegger	Mark Zawacki
Muralidhar & Saroja Reddy	Joseph & Carol Ryan	Kay Shillito	Norma Stone	Corporate Headquarters	Paul & Janet Weitz	The Estate of
Thomas Reding	Marie Saager	Bernard Shore, MD	Joan Stratton	United Way of Greater	Marijean Weld	Lewis D Zeitler
James & Judith Redmond	Rajasundari Sabaratnam	Todd Shrier	Bernard Strohmeier	Rochester	Delores Welkey	Bruce Zicari
Carol Reed	Linda Sabha	Denise Shukoff	David Strong	Thomas & Margaret Upson	Annie Wells	Raymond & Marcia Ziegler
Thomas Rees	William Sachman	Lary & Debra Siebert	Kathy Strong	David Urban	James & Judith Wenskus	Regina Zielke
Richard & Mary Reeves	Barbara Sagajllo	Thomas Silco	Teresa Sukiennicki	Charles Urso, Jr	Patricia Werner	Dave & Barb Zimmer
Mary Regula	Jodi Salatti	Terrisa Silvestri	Annarose Sullivan	David Utter	Pamela Wesley	Betty Zollweg
Margaret Reigelsperger	Alice Salzberg	JoAnne Sims	Carol Sullivan	Catherine Vail	Norma Whatman	Mark & Leslie Zornow
Bruce Reilich	Paul & Catherine Sanelli	Alma & Cecil Small	Natalie Sullivan	Roger Van Baaren	Carl & Sharon Wheat	Jules Zysman, MD
Mary Reilley	Janet Santacesaria	Donald & Betty Smith	Thomas Sullivan	George Vanarsdale	George Wheeler	
Ann Reinhard	Gary & Elaine Santangelo	Doris Smith	Judi Swanson	Margaret VanBuren	Robert & Laurie Wheeler	<i>**Promise Campaign</i>
Robinson & Karen Rhodes	Edwin Saphar, Jr	Heather Smith	David & Joan Swarthout	Peter & Carolyn	Paul & Melinda Whitbeck	<i>Pledge</i>
Eric & Joan Rice	Franz & Joanne Sasse	Joan Smith	SWBR Architects	Vandenberg	Sarah White	
Nancy Rice	Rajaletchumy Sathasivam	Sandra Smith	Kathrine Switzer	Nancy VandenBout	Walter Whitfield	
Thomas Rice	William & Susan Sauers	Thomas & Pat Smith	Marcia Szczepanski	David & Ruth	Dale & Lorraine	
Jo Ann Richards	John & Jaime Saunders	Diane Snyder	Richard & Beverly	VanderLinden	Whittington	
Byron & Sandra Richolson	Leon & Anne Sawyko	Kathleen Snyder	Szewczyk	Lorraine Vandine	Christine Wickert	
C Walter & Donna Ries	Anthony & Connie Scalise	Gregory Soehner	Anthony & Cheryl	Stanley VanSavage	Josephine Wicks	Robert H. Albach
Marsha Rifkin	James & Jeanne Scantlin	Irwin Solomon	Tarantello	Steven & Beverly	Marcia Wiesenberg	Anonymous
Jay & Harriet Riggs	Grace Scarinzi	Carol Sonnenfroh	Bobby Taylor	Vantroost	David Wight	Patrick Aquilina
John Risio	Delores Scarpulla	Susan Sorci	Linda Teague	June Vaughn	Ruth Wik	Pranab Bagchi
Larry & Diane Risley	Barbara Schaeffer	Meredith Sorensen	Carol Tegas	Marcena Ver Ploeg	Helen Wiley	Rachel & David Bandyh
Aszie Rivers	James & Nancy Schaeffer	Loraine Spagnola	Robert & Karen	Robert & Karen Verrone	Richard & Marcia Wilke	Beverly T Bowen*
Mary Rivoli	Michael & Deborah	Pauline Speciale	Teitelbaum	Joseph & Rasheema Vick	Pamela Wilko	George & Mary
Teresa Robach	Schauseil	Marlene Speers	Lesia Telega	Justin & Louise Vigdor,	Jerry Willer	Brennan-Hayes
Karen Robbins	Anthony & Mary Lou	Philip Spellane	Robert Temkin	Esq	Ryan Williams	Ann Marie Cook
Bradley & Virginia	Schifano	Richard & Barbara	Edward Thomas	The Village at Mill	James & Carol Wilson	Carol Driscoll
Robinson	Julienne Schillaci	Sperduto	John & Sandra Thomas	Landing	WinnCompanies @ Sibley	Jocelyn Hicks-Brody, Phd
Joan Robinson	Gail Schilling	Roger & Deborah Sperling	Julian & Mary Jane	The Village at Unity	Square	Art & Barb Hirst
Laura Robinson	Kenneth Schirmuhly	Andrew & Jean Sperr	Thomas	Henry Vitale	Dorothy Winslow	Laura Humphrey
Maria Robusto	Marcella Schnorr	Louis & Lynn Spiotti	Kathleen Thomas	Joseph Vitello	Kenneth & Joan Wirt	Will Irwin
Rochester Female	Ella Schuller	Anne Sprout & James Joss	Margaret Thomas	Laura Vivenzio	Bill Wiseman	Raymond F Jones
Charitable Society	Stephen & Carol Schulz	Julie St Germaine	Debra Thompson	Hermann Vogelstein	Sandra Witkowski	Michael Kaufman
Rochester Presbyterian	Roy Schuth	St John The Evangelist	Iona Thompson	Gary & Kathleen Vogler	Roswell & Linda Wood	Gertrude E Langen*
Home	Sally Schuth	Church	Edward & Virginia Thorp	Theodore & Barbara Voll	Robert & Anne Woodhams	Lawrence Martin
Rochester Regional Health	Janis Schwappacher	St John's Lutheran Church	Mark Tiernan	John & Susan Volpel	Frederick & Evelyn Wool	Mark McDermott
Larry & Barbara	Jeffry Schwartz	XYZ Senior Group	Sally Tompkins	Mary Vought	David Worl	Thomas McDermott
Rockefeller	Marie Sciolino	St Peter's Episcopal	Robert Topel	Mary Wade	Sheilla Wray	Stephen & Jo Anna Meyer
Carlos Rodriguez, Esq	David & Kimberley Scriber	Church	Town of Brighton	Patricia Wagar	Catherine Wright	William G Schilbe*
David & Ruth Rogers	John & Shirley Scripture	Myra Staertow	Judith Trabert	Kathleen Wagner	Dennis & Sandra Wright	Linda Shepard*
Joanne Rogowicki	James & Mary Sculley	Eric & Donna Stahlecker	Christine Tramel	Mary Wagner	Nancy Wright	Meredith Sorensen
Robert & Dorothy	Judith Seager	Theofilos Stathopoulos	Gordon & Margaret Troup	Lisa Waldman	James & Sharon Wylie	Bernice Stauber*
Romanet	Walter & Christine Seaman	John & Bernadette	James & Chin-Hua Tseng	William & Sheila Walsh	Xerox Leadership	Elizabeth J Thomson*
Marion Roth	Jeremy Sedelmeyer	Stebler	Martin & Gertrude Turberg	Penny Warenko	Association	Lewis D Zeitler*
Harvey & Janet Rothbeind	Sandra Sedlacek &	Donald Steele	Renee Turner	Barbara Warta	Joseph & Gloria Yacoub	
Bruce & Dorothy Rouse	Donald Nobes	Sharon Steigerwald	Susan Turner	William & Joan Wayne	Joseph & Joyce Yatteau	<i>*Deceased</i>
Jody Rowe	Mary Seebach	Linda Steinberg	Deborra Tuszyński	Blake & Karen Webber	Geraldine Yawman	
LaRon Rowe	William & Janet Selke	Suzanne Steiner	Nora Tuthill	David & Claudia Weber	Janet Young	
Mary Rowland	Edgar & Barbara Sevilla	Scott Stenzel	Lawrence Tuttobene	Marion Weber	Rodney Young	
Sanford & Nadine Rubin	Michael Shacket	Marilyn Sterling	Twelve Corners	Webster Senior Center	William & Judith Young	
Roger Rubinstein	Patricia Shaheen	Duane & Deborah Stevens	Presbyterian Church	Susan Wegman, MD	Carolyn Young Parmarter	
Michael & Suzanne Ruisi	Joseph & Mary Kathryn	Robert & Fannie Stevens	Women's Association	Charles & Judy	Wende Young, MD	
Elizabeth Ruiz	Shanahan	Thomas & Sharon Stevens	Janet & Tracey Tyler	Weidenborner	Julian Yudelson	
Philip Rupert, Jr	Alan & Bernice Shank	David & Barbara Stewart	John & Janet Tyler	David & Harriet Weinstein	Roger & Nancy Zaenglein	
Victoria Ruppert	Linda Shea	Karen Stewart	Timothy & Heidi Tyler	Ann Weintraub	Judith Zahn	

**Circle of Life
Society Members**

Robert H. Albach
 Anonymous
 Patrick Aquilina
 Pranab Bagchi
 Rachel & David Bandyh
 Beverly T Bowen*
 George & Mary
 Brennan-Hayes
 Ann Marie Cook
 Carol Driscoll
 Jocelyn Hicks-Brody, Phd
 Art & Barb Hirst
 Laura Humphrey
 Will Irwin
 Raymond F Jones
 Michael Kaufman
 Gertrude E Langen*
 Lawrence Martin
 Mark McDermott
 Thomas McDermott
 Stephen & Jo Anna Meyer
 William G Schilbe*
 Linda Shepard*
 Meredith Sorensen
 Bernice Stauber*
 Elizabeth J Thomson*
 Lewis D Zeitler*

**Deceased*

In Honor of DONORS

IN HONOR OF
Albert Algarin
Landsman Development

IN HONOR OF
Krishnan Balasubramanian
Vatsala Balasubramanian

IN HONOR OF
Dr Betsy Balzano
Patricia Baker

IN HONOR OF
Jim Bassett
Anonymous

IN HONOR OF
Anne Biringer
Bethany St Pierre

IN HONOR OF
Hersch Wolf Bornstein
Carolyn Bornstein

IN HONOR OF
Shirley Bunten
Thomas & Rose Swartz

IN HONOR OF
Allison Campbell-Granata
Patricia Campbell

IN HONOR OF
Anagisa S Chande
Manisha Mande

IN HONOR OF
Stella Charny
Edwin Charny

IN HONOR OF
Jamie Charters
Mary Ann Collet

IN HONOR OF
John Colquitt
Sheryl Colquitt

IN HONOR OF
Ann Marie Cook
Patrick & Amy Ahern
Greater Rochester Health
Foundation
Gregg Lederman

IN HONOR OF
Lena Cupello
Emilia Giacalone

IN HONOR OF
Carol D'Agostino
Mary Kitchenman

IN HONOR OF
Joan Davis
Benjamin Davis

IN HONOR OF
Arlene Driscoll
Carol Driscoll

IN HONOR OF
Eldersource
Jack & Faith Aiello

IN HONOR OF
Brittany Flanagan
Betty Gardner

IN HONOR OF
Evelyn Frazee
Ellen De Buono

IN HONOR OF
Gail & Vince
Randall Zea &
Nancy Scharlock

IN HONOR OF
Megan Hardwyck
Sandor & Anna Laszlo

IN HONOR OF
Jack Hart
Patricia Barry

IN HONOR OF
Cindy Helzer
Carol Pipitone

IN HONOR OF
Dr Jocelyn Hicks-Brody
Stephen & Lorraine
Dvorin, MD

IN HONOR OF
Vicky Hines
Marc Cohen

IN HONOR OF
Carl Holland
Oscar & Staffie Morales

IN HONOR OF
Ginni Jurkowski
Richard & Juliana Buck

IN HONOR OF
Dolores Kellett
Teresa Kellett

IN HONOR OF
Sister Maria Kellner, SSJ
Norman & Agnes Gebauer

IN HONOR OF
Tracey Kilgras
Milford Apetz

IN HONOR OF
Dr Klorman
Chantal Baieve

IN HONOR OF
Michelle LeBoo
Bernard & Michael Roth

IN HONOR OF
Lifespan
Ruth Danis

IN HONOR OF
Lifespan Staff
Karl Hagen

IN HONOR OF
Lifespan Volunteers
Earl & Nancy Sweet

IN HONOR OF
Lifespan's EAPP program
Linda Guido

IN HONOR OF
Lifespan's Health and
Wellness Programs
Louise Peoples

IN HONOR OF
Bill Luthin
Timothy Bassett

IN HONOR OF
James Lynd
John & Judith Lynd

IN HONOR OF
Margaret
Lisa Heath

IN HONOR OF
Marrocco family
Donna Gaiter

IN HONOR OF
Tom & Cheryl McAfee
Richard & JoAnne Dries

IN HONOR OF
Ed McKeown, Sr
Edward & Angela
McKeown

IN HONOR OF
Namita Mehta
Nancy Behrens

IN HONOR OF
Dr Daniel Mendelson
William Hall, MD

IN HONOR OF
Eve Moses
Helene Newman

IN HONOR OF
Julie Murawski
Francis & Anne McKenna

IN HONOR OF
Elizabeth Myott
Wallace Myott

IN HONOR OF
Thomas Nasman
Sylvia Nasman

IN HONOR OF
Ann Olin
Mary Kitchenman

IN HONOR OF
Sarah Otis
Earth And Cup

IN HONOR OF
Jackie Perez-Ladiges
David & Rosemary Cook

IN HONOR OF
Arlene Phillips
Suzanne Phillips

IN HONOR OF
Patricia Phillips
Steven Russell & Phyllis
Rifkin-Russell

IN HONOR OF
Ken Posman
Kathleen Pilletteri
Jody Rowe

IN HONOR OF
Gail Richeson
Joan Attardo

IN HONOR OF
Jody Rowe
Judy Dell
Linda Steinberg

IN HONOR OF
Dolores Rycenga
Richard & Clara Marchese

IN HONOR OF
Mr & Mrs Saager
Marie Saager

IN HONOR OF
Sandy Schencke
Mary Chapin

IN HONOR OF
Rose Schulman
Walter Muench

IN HONOR OF
Ben Start
Kathleen Start

IN HONOR OF
Nancy Szembrot
David & Rosemary Cook
Therese Reynolds

IN HONOR OF
Joanna Tinch
Mikhail & Tatyana Shugol

IN HONOR OF
Joan White
Patricia Anthony

IN HONOR OF
Leonard Willard
Sylvia Nasman

IN HONOR OF
Joyce Zeiner
Mary Chapin

In Memory of DONORS

IN MEMORY OF
Ronni Abramovitz
Dennis & Sandra Wright

IN MEMORY OF
Clara Ashford
Willie Mae Cliett

IN MEMORY OF
Wim Baars
Luisa Baars

IN MEMORY OF
James Baker
James & Mary Peters

IN MEMORY OF
Werner J Baum
Roselyn Freedman-Baum

IN MEMORY OF
Richard Bennett
Joann Bennett

IN MEMORY OF
Morton L Bittker
Sally Oster

IN MEMORY OF
Charles H Bixby
Beverly Bixby

IN MEMORY OF
Timothy Brown
Richard & Lindsay Brown

IN MEMORY OF
Clara Burnard
Nona Bluestein
Gail Briggs
Robert Mancini
Maureen Murphy
Martha Simmons

IN MEMORY OF
E Jean Collier,
Robert Collier
& George J Brooks
David & Susan Brooks

IN MEMORY OF
Simon Colon & Dashell
Colon Johnson McIntyre
Migdalia Julia

IN MEMORY OF
Mary Dodge
Daniel Dodge

IN MEMORY OF
Thomas Dwyer
Colleen Donegan

IN MEMORY OF
Carol "Sally" Edgett
Allan & Patricia Wallace

IN MEMORY OF
Phyllis Lorraine (Welch)
Faivre
Lynn Gould

IN MEMORY OF
Al & Terry Ferrari
Anne Ferrari Mancuso

IN MEMORY OF
Susan Fitzgerald
Terence J Fitzgerald

IN MEMORY OF
Katherine Foster
Gary Battaglia

IN MEMORY OF
Luis Freile
Victoria Freile

IN MEMORY OF
Alice Goldman
Simi Singer

IN MEMORY OF
Marian Gray
Patricia Gray

IN MEMORY OF
Karen Grella
Jewelle Gayle-Jones

IN MEMORY OF
Nancy Haelen
Matthew & Anne Casale
John Frost
Annette Gleason
John & Marilyn McCrank
James Terwilliger
Janis Mosher

IN MEMORY OF
Kathleen Herman
Lawrence & Randi
LaRussa

IN MEMORY OF
Nancy Howland
Patricia Curran
Richard & Georgia
Howland
Margaret McCarthy
Helen Tierney
Chrispin & Renee White

*IN MEMORY OF
Ira Pogal
Saulbert & Abigail Rasnick*

*IN MEMORY OF
Marlys V Jones
Alan Jones*

*IN MEMORY OF
Bert Joseph
Lawrence & Randi LaRussa*

*IN MEMORY OF
Arthur Kaufman
Michael & Karin Kaufman*

*IN MEMORY OF
Al & Dolores Kellett
Teresa Kellett*

*IN MEMORY OF
Sam Kinel
Roberta Kinel*

*IN MEMORY OF
Conley & June King
Leita King*

*IN MEMORY OF
Richard Konarski
Sandra Konarski*

*IN MEMORY OF
Barbara Lapo
Mary Reed*

*IN MEMORY OF
Mr & Mrs LaVerne
Cindy Sharick*

*IN MEMORY OF
Irene Breen Lenhard
Lawrence & Randi LaRussa*

*IN MEMORY OF
Alvin Lentzer
Peter & Kelly Wing*

*IN MEMORY OF
Thea D Lochner
Valerie J Fucile*

*IN MEMORY OF
Warren Martin
Sharon Steigerwald*

*IN MEMORY OF
Beatrice McCarthy
Ann Marie Cook
Michael & Colleen Ras
Melissa Thomas
Evelyn Thomas
Eileen Thomas*

*IN MEMORY OF
Edward McNamara
Daniel Cole*

*IN MEMORY OF
Sylvia Morris
Richard Morris*

*IN MEMORY OF
Their Mother
Anne Blodgett*

*IN MEMORY OF
Dolores Munt
John Munt*

*IN MEMORY OF
Leo Thomas Neugebauer
Rosemary Statt-Hanscom*

*IN MEMORY OF
Peppy Owens
Olive Owens*

*IN MEMORY OF
Mary L Palidar
Gregg & Linda Joss*

*IN MEMORY OF
Mary Pantas
Nancy Papapanu*

*IN MEMORY OF
Their Parents
James McGrath*

*IN MEMORY OF
Sheila Peterson
Joan Brown*

*IN MEMORY OF
Bessie Pires
Arthur Pires*

*IN MEMORY OF
Craig T Raisner
J Thomas & Thekla Raisner*

*IN MEMORY OF
Robert Carl Reese
Donald Reese*

*IN MEMORY OF
Roseanne Risio
Madaline Vivenzio*

*IN MEMORY OF
Helmut Saager
Marie Saager*

*IN MEMORY OF
Anthony Santo
Elaine Santo*

*IN MEMORY OF
Anita Savoca
Steven Savoca*

*IN MEMORY OF
Joyce Schencke
William Schencke*

*IN MEMORY OF
Rita D Schlicker
Robert & Patricia Ehlers*

*IN MEMORY OF
Ron Schoeneberger
Maureen Schoeneberger*

*IN MEMORY OF
Allan Schroeder
Linda Jones
Sheila Korol-Joseph*

*IN MEMORY OF
Robert J Scott
Julianne Scott*

*IN MEMORY OF
Anne M Sevier-Buckingham
Anonymus
Ann Marie Cook*

*IN MEMORY OF
Mr & Mrs Henry Sharick
Cindy Sharick*

*IN MEMORY OF
Linda Costanza Shepard
Theodore Shepard*

*IN MEMORY OF
William & Jean Sloan
Patrick Sloan & Kristine
Tenebruso, MD*

*IN MEMORY OF
Donald E Snyder
Dorothy Snyder*

*IN MEMORY OF
Deborah Spellane
Marilyn Templeton*

*IN MEMORY OF
Florence L Sporn
Leon Sporn*

*IN MEMORY OF
Constantine Stefanou
Nancy Papapanu*

*IN MEMORY OF
Marian Sturm
Lawrence & Randi LaRussa*

*IN MEMORY OF
Jackie Swift
Peter Swift*

*IN MEMORY OF
William Thomas
Steven & Nora Coco
Ann Marie Cook
Paul & Cynthia
McConologue
The Philbin Family
Gary & Monica Tajkowski
David & Cheryl Ditch*

*IN MEMORY OF
Timothy Brown
Barbara VanGraafeiland*

*IN MEMORY OF
Paul Tremmel
Lucretia Tremmel*

*IN MEMORY OF
Rocco M Vivenzio, MD
Christopher & Barbara
Baumer*

*Erin Brooks
Cornelius & Rosemary
Hanley
Lawrence & Randi LaRussa
Annette Medina-Walpole
Daniel & Linda
Mendelson, MD
Mary Jo Newcomb
Harriett Nuciola
Elizabeth Tyson
Madaline Vivenzio
Kathryn Vivenzio
Maria Vivenzio
Laura Vivenzio
Paul & Marianne Weiser*

*IN MEMORY OF
Gerard & Golda
Weingartner
Kristine Weingartner*

Julie Murawski, director of development

Lifespan's
Boardroom
is now the
**John DiMarco
Family
Boardroom**
in recognition of
John DiMarco's
generous support
of Lifespan.

Corporate and Foundation Support of Program

FUNDER	PROGRAM
Farash Foundation	Gerontology Intern Education
RACF Fox-Knoeferl Family Fund	Healthcare Coordination
Greater Rochester Health Foundation	Community Care Connections
Health Research, Inc	Health and Wellness
Muriel H Marshall Fund at Rochester Area Community Foundation	Financial Management
Helen L Morris Foundation	Home Modification
Mother Cabrini Health Foundation	Memory Care & Elder Abuse Prevention
MVP Heath Care	Home Modification
New York Bar Foundation	Future Care Planning Service
NYS Health Foundation	Community Care Connections & Geriatric Addictions
Richard C & Mary Anne Palermo Family Fund	Home Modification
Regional Primary Care Network	Community Care Connections
United Way of Greater Rochester	Systems Integration Project
Wegmans	Community Care Connections
Western & Central NY Health Foundation	Community Care Connections in Genesee County
Louis S & Molly B Wolk Foundation	Wolk Cafe at Sibley Square



Non Profit Org.
U.S. Postage
PAID
Rochester, NY
Permit #478

LIFESPAN OF GREATER ROCHESTER, INC.
1900 SOUTH CLINTON AVE
ROCHESTER NY 14618

ADDRESS SERVICE REQUESTED

 LIFESPAN WELCOMES EVERYONE



LEFT: Some of our 60 Ombudsmen, volunteers trained as advocates for people living in long-term care, gathered for their annual luncheon.

ON THE COVER: Taking it on! Six members of our Lily Café at the Maplewood YMCA, a lively gathering spot for older adults, are 90+ years-old! Pictured are Terry Smith, Bill Schencke, Nell Bostick, Bernie Roth, Ellie Maher and Bob Stevenson.